

Reuse AIR SUSpension wiring GX470 V1.2

Wire color

2003 = Confirmed

2004 = Confirmed

2005 = Confirmed

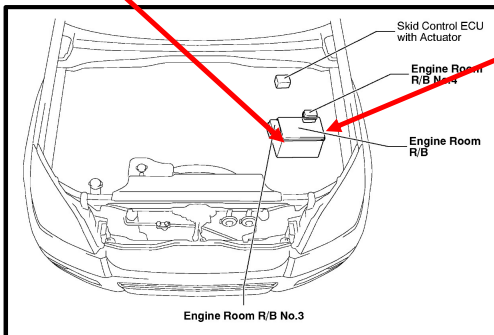
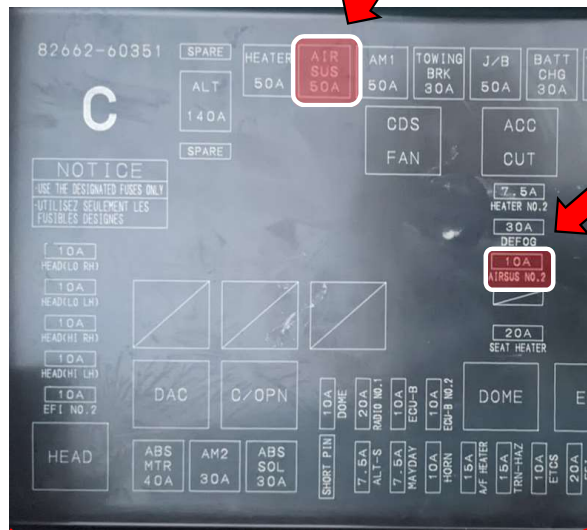
2006 = Confirmed

2007 = Confirmed

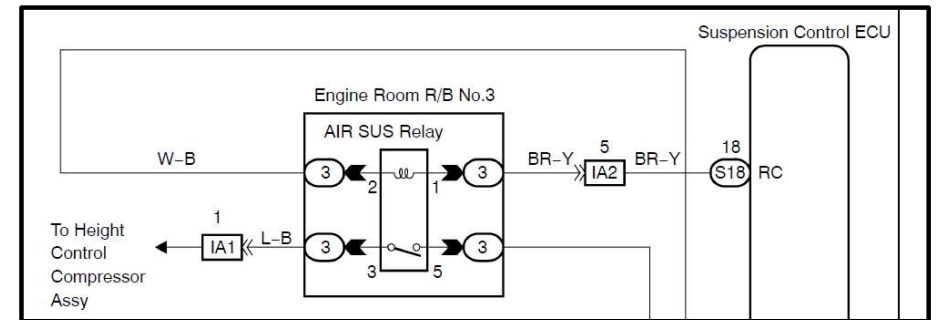
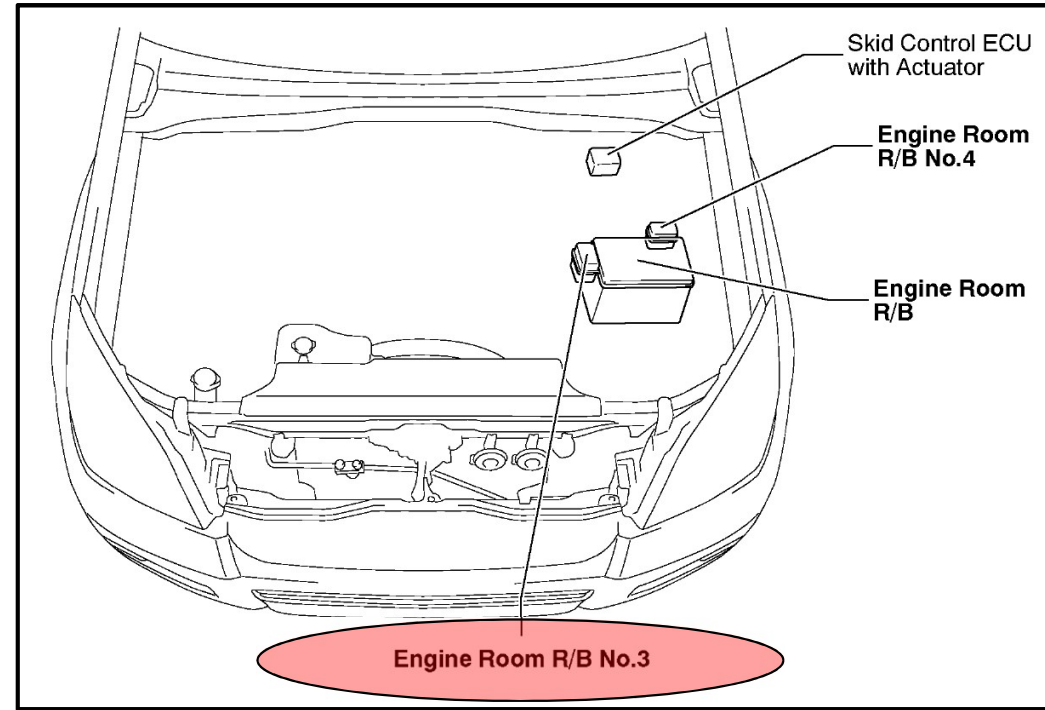
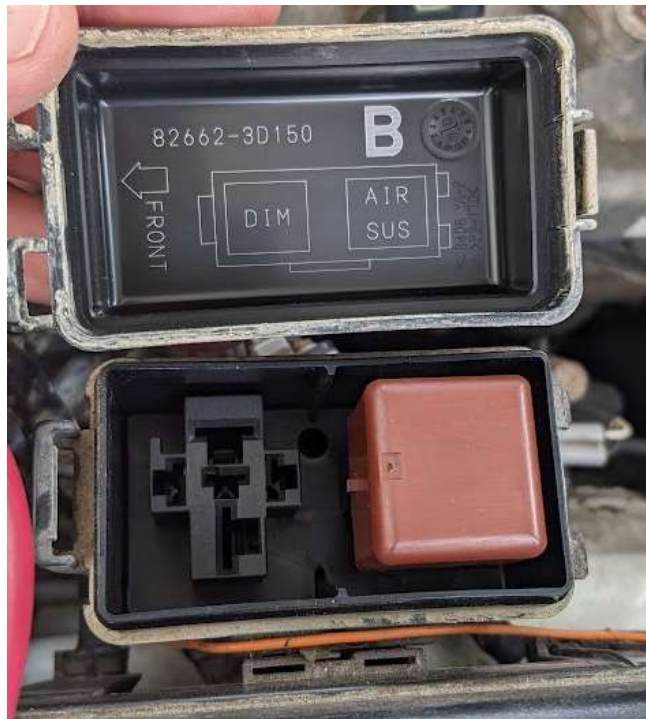
2008 = Confirmed

2009 = Confirmed

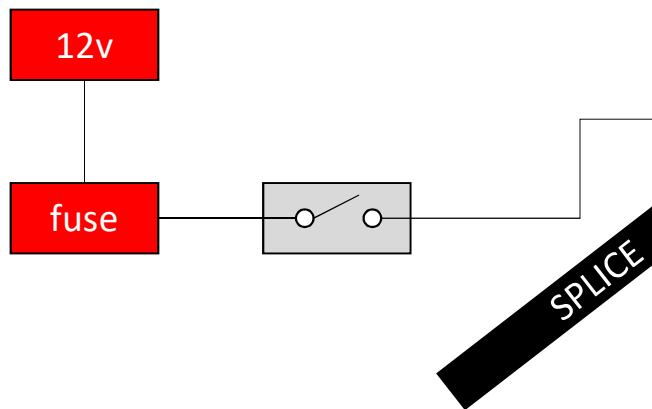
Remove AIR SUS and AIR SUS NO.2 fuse



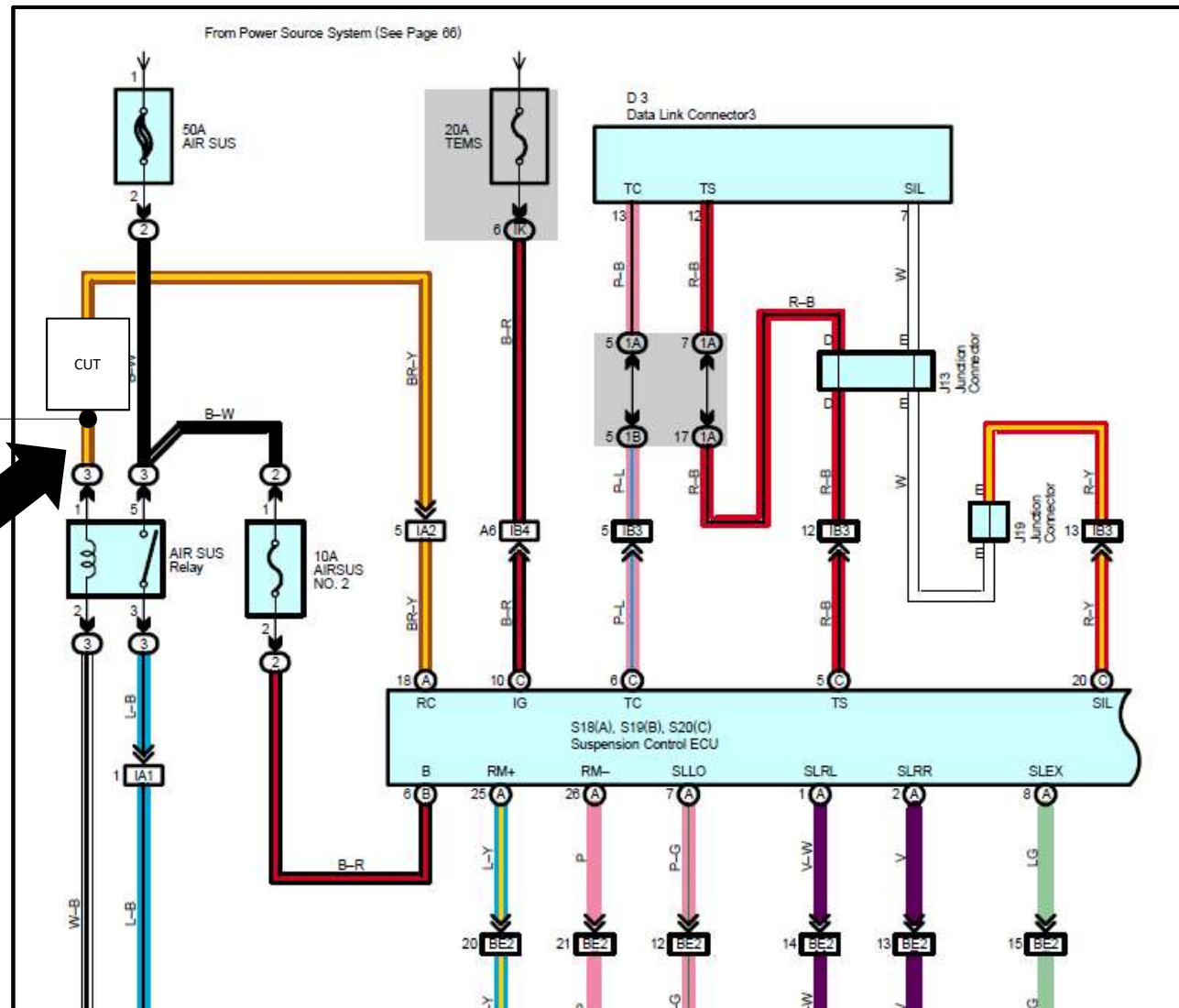
1. Locate R/B No.3 (Relay Box #3)
2. Inside the cover, the relay should be labeled AIR SUS



For reuse of the existing relay
- Add switch control of relay



1. Locate the BR-Y (Brown-Yellow) wire coming out of the bottom of the fuse box.
2. Splice in a fused & switched 12v power wire.

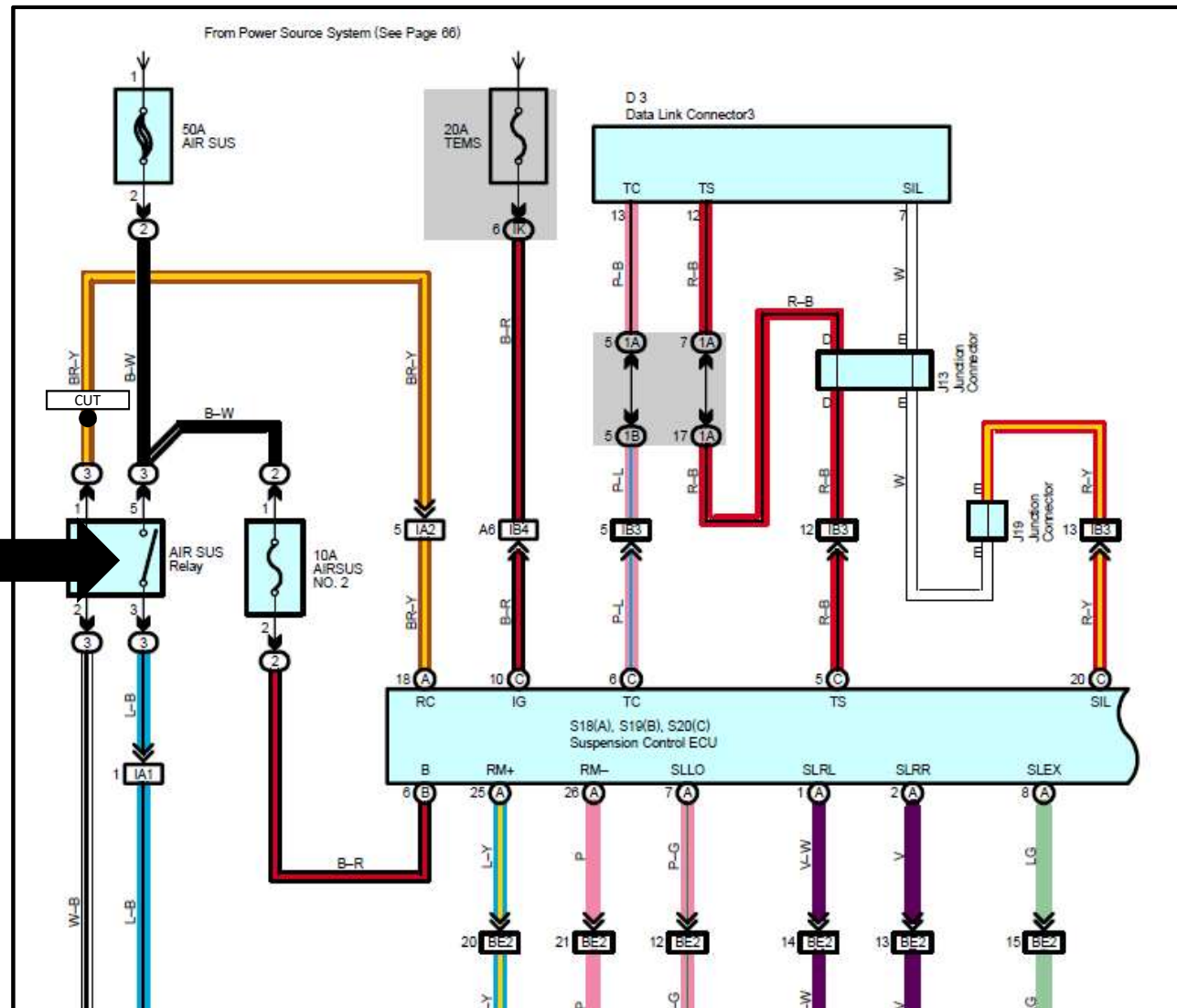


For constant power
- Bypass the relay



Remove relay, add relay bypass

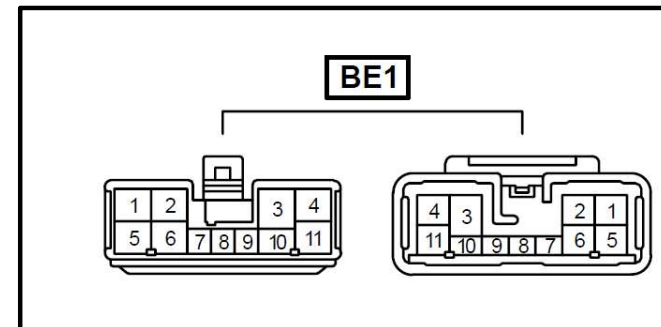
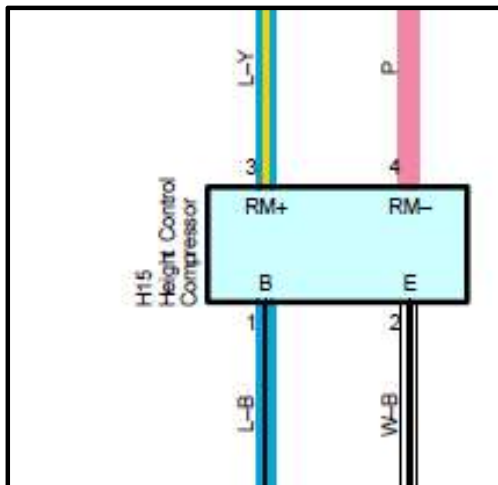
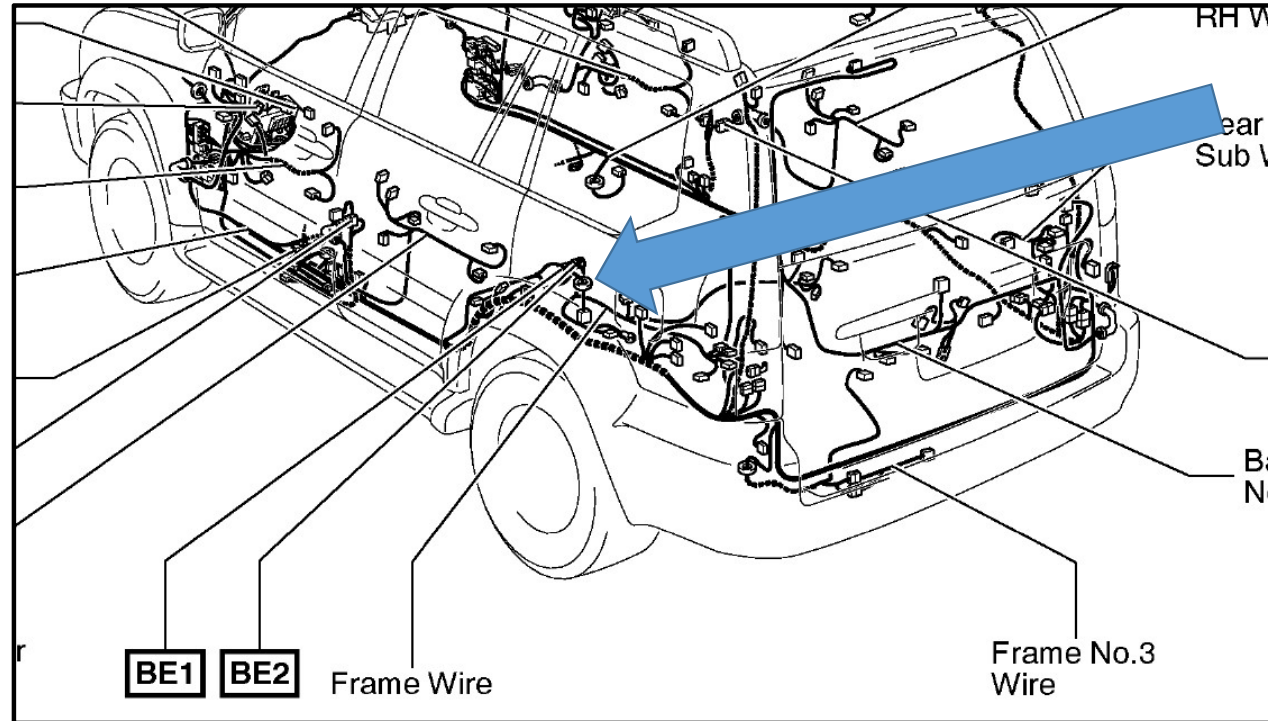
1. Remove the relay from the box.
2. Install relay bypass
3. *Alternate option is to de-pin the box and splice the B-W & L-B colored wires together



OPTION 1 (more work but cleaner wiring)

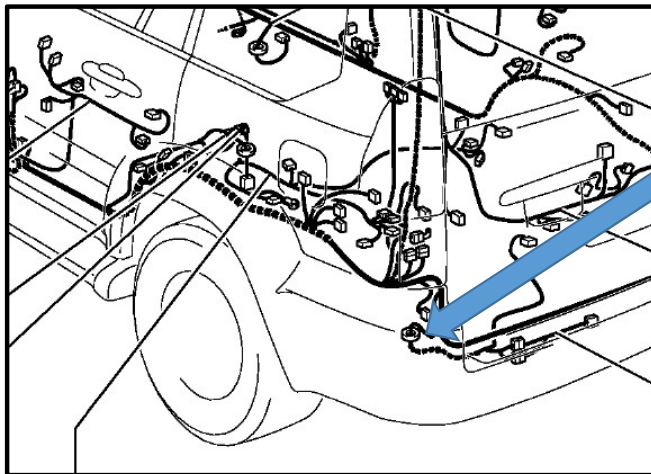
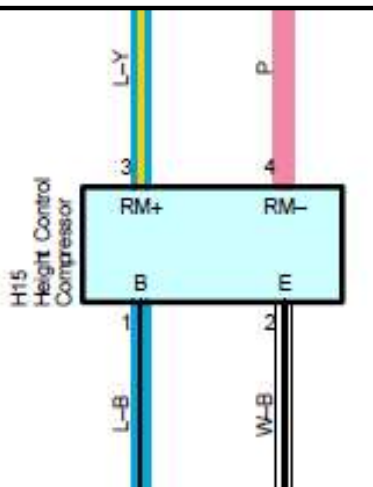
1. Under the driver side middle seat
Access the Blue-Black (L-B) wire at
connector BE1. You can also use the
ground White-Black (W-B) if you want.
Other wires can be removed. You can
splice here or pull the wiring up from
the back (requires un-clipping some
wire clips).

*This requires removal of the seat and
carpet to access



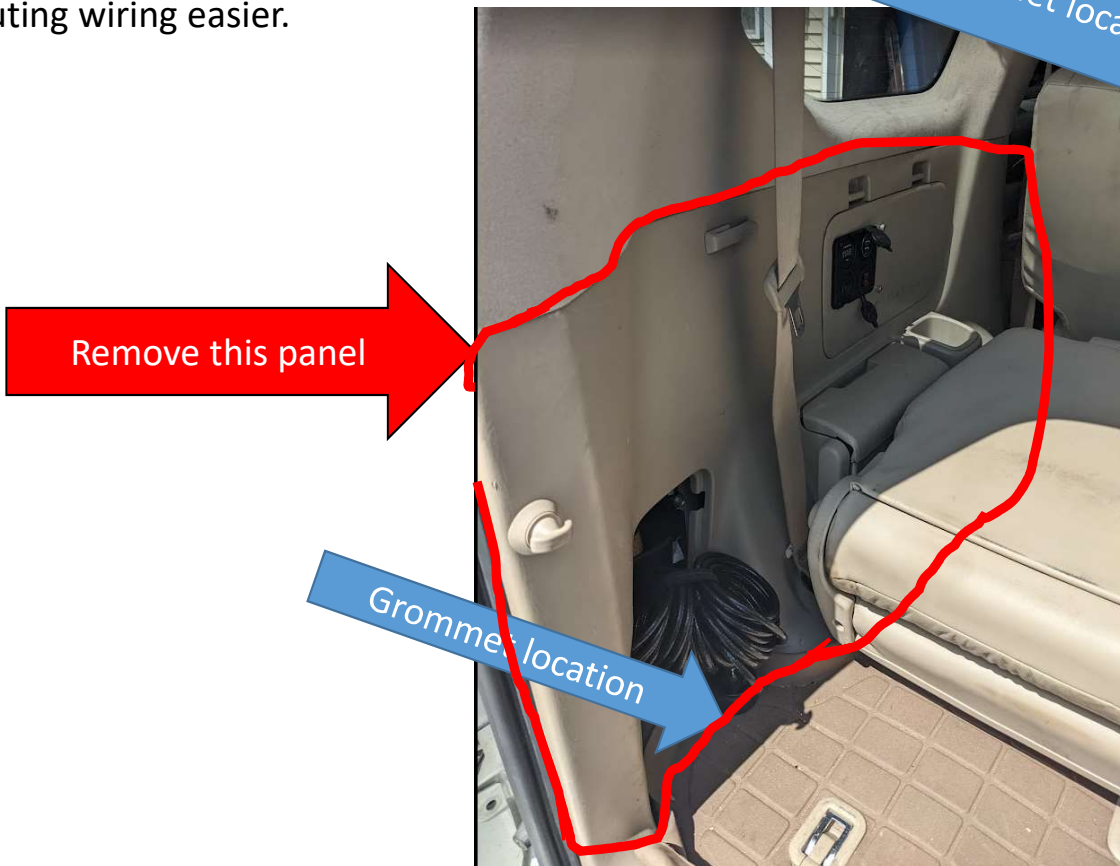
OPTION 2 (less work)

1. Under the driver side rear body, aft of the tire you will find the AIR SUS Compressor connector (4 pins that match the wiring colors below). Splice into the Blue-Black (L-B) wiring for power and White-Black(W-B) for ground.
2. Feed your wires into the grommet back into the cabin if desired as seen on the right.



- 1. If you want to pull the wiring back into the cabin you need access to the grommet.
- 2. Carpet can be pulled to access

*Removal of panel not required but makes routing wiring easier.



The rest is up to you

- Add your desired 12V accessory
- After all work is complete reinstall **AIR SUS** fuse.